

Optinet™
FLEX
ADVANCED PRACTICE MANAGEMENT SOFTWARE



A guide to EDI Ordering in FLEX from Optinet.

Prepared by Chris Gray – chris.gray@optinetuk.com

Part 1 – What you need to be able to use EDI Ordering

- An OMA Compliant Tracer connected by serial or a serial / USB connector.
- The tracer will need to be calibrated daily using the test trace template.
- VCA Software / Drivers, downloaded from lens supplier website.

Part 2 – Setup in FLEX

In Setup – System – PC, set the **EDI Ordering / Winfit** details to the location of the VCA Software exe, the **Trace Path** to the location where you wish to store your traces and the **Tracer Scale** to “1”. They will all be set to “5” by default.

The screenshot shows the 'Local Device Settings: ChrisG-Win8' window with the 'PC Settings' tab selected. The 'EDI Ordering' section includes fields for 'Tracer EXE Path', 'Trace Path', and 'Tracer Scale', all currently set to '5'. The 'WinFit' section includes fields for 'WinFit EXE Path' and 'WinFit Export Path', both currently set to '5'. The 'Thomson Software' section includes a field for 'Phoropter Path' set to '5'. The 'Branch' section shows 'Location' set to 'DefaultSCOTT'.

In Setup – Stock – General, make sure the **Frame Type (Description)** “marries up” to one of the four relevant **Hawk. Order Types** (Metal, Plastic, Supra / Groove, Rimless).

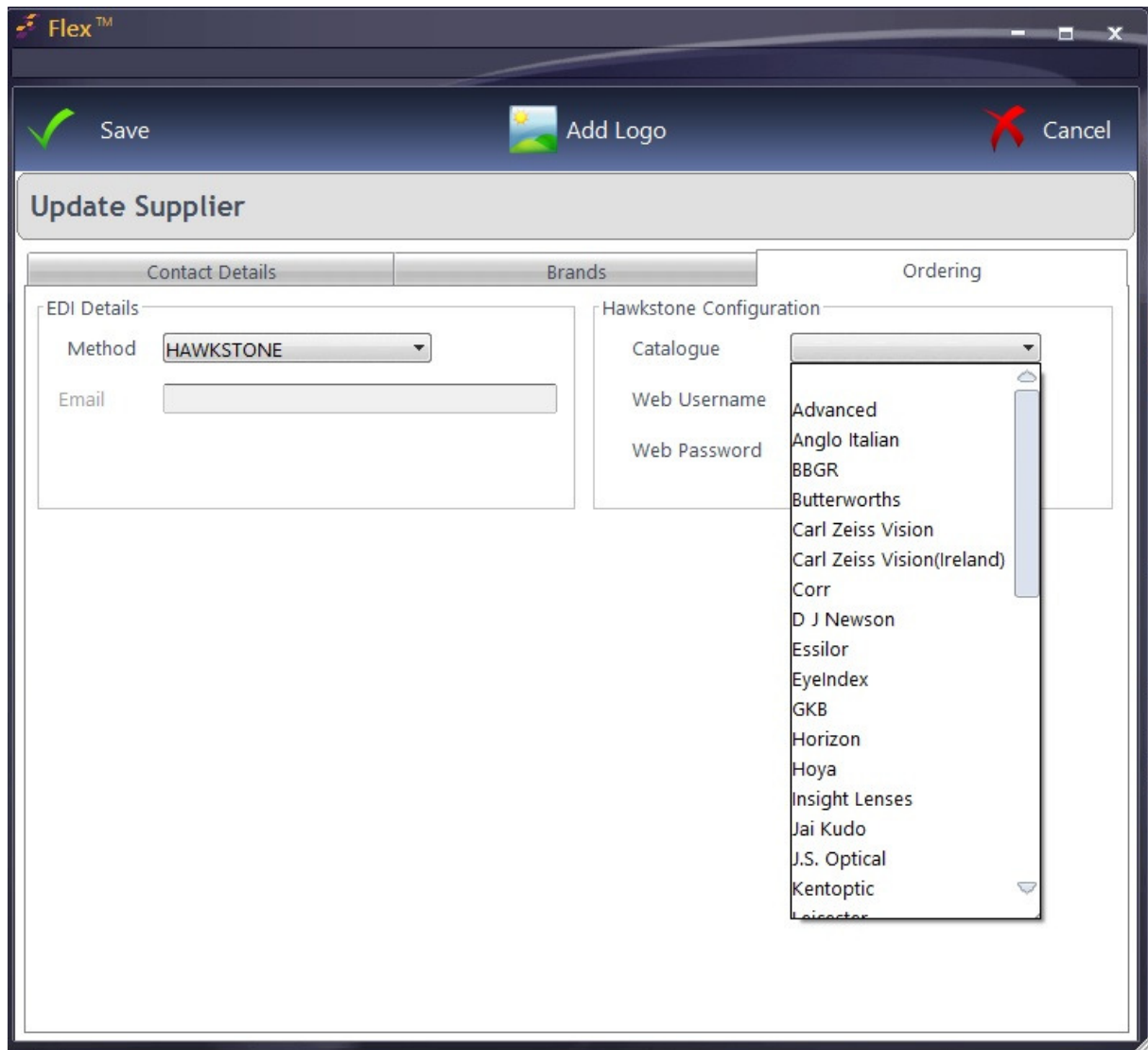
Setup Stock

Frame Setup

Description	Hawk. Order Type
Metal	Metal
Metal Half Eye	Plastic
Nylon Supra	Metal
Plastic	Supra / Groove
Plastic Half Eye	Rimless
Rimless Faceted	Supra / Groove
Rimless no Screws	Supra / Groove
Rimless Screwed	Supra / Groove
Supra	Rimless
Supra Half Eye	Rimless

Gender Description
Male
Female
Children
Unisex

In Setup – Stock – Suppliers, double-click a Supplier. Under the “**Ordering**” tab, select the **Method** as HAWKSTONE, and on the right-hand side of the screen, select the relevant **Catalogue** and enter your **Web Username** and **Web Password**.



Part 3 – Using EDI for Ordering

Create and confirm a Dispense as normal, ensuring a trace file was added as part of the Dispense (or the frame already had a trace attached to it).

Under the Orders tab, press the **"Send Order"** button towards the top-right of your screen, shown below.



It will open up the order details, encompassing the Rx, Frame and Lenses.

Choose the **Supplier, Type** (e.g. Remote Edged, Uncut) and **Frame** (e.g. Plastic, Metal).

When you are happy with the details, press **Send Order**. If it is placed successfully a notification will appear on screen and the WIP (Work in Progress) will updated to "Order Placed". If not, it will prompt you to go the web interface to complete it.

The screenshot shows the 'Send Order: #775' window in the Flex software. The window title is 'Send Order: #775' and it includes a 'Close' button in the top right corner. Below the title bar, there are fields for 'Supplier Order No.' and 'Date / Time' (set to '_/_/0000').

The main area contains several sections:

- Supplier, Type, Frame:** Three dropdown menus. The 'Type' dropdown is currently set to 'Uncut'. A 'Send Order' button with a globe icon is located to the right of these dropdowns.
- Order Summary:** A section containing patient information: Name: Smith, Chris (Mr), DOB: 22/02/1973, and Address: (empty).
- Lenses:** Two sections for the Right (R) and Left (L) lenses. Each section includes fields for Coat, Sph, Cyl, Axis, Prism (Hoz), Prism (Ver), PD, Edge Thickness (0.00), Centre Thickness (0.00), and Front Curve (0.00). There are also Tint and Coat fields.
- Frame:** A section containing fields for Size, Dihedral (°) (0.00), Box Bridge (0.00), H.Box (0.00), V. Box (0.00), Panta.Tilt (°) (0.00), Panta.Tilt (mm) (0.00), BVD R (0.00), L (0.00), R HT (0.00), L HT (0.00), Dir. (dropdown), Inset (0.00), and Trace Ref. There are also 'Right' and 'Left' checkboxes.